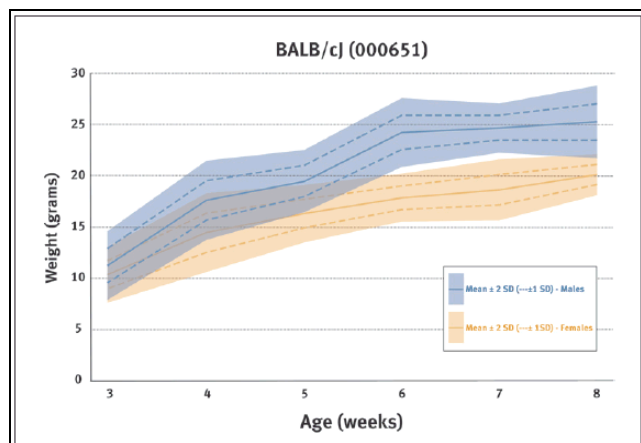


Complete data with range and standard deviations available from the Mouse Phenome Database (MPD, www.jax.org/phenome) and enter the term "jaxpheno" into the search box, or go directly to this url: phenome.jax.org/pub/cgi/phenome/mpdcqi?rtn-views%2Fsearch&req=jaxpheno.



Body Weights							
Age (weeks)		3	4	5	6	7	8
Female	Mean	10.45	14.50	16.36	17.91	18.69	20.18
	SD	1.38	1.91	1.41	1.17	1.49	1.00
Male	Mean	11.42	17.73	19.63	24.37	24.83	25.37
	SD	1.67	1.94	1.53	1.69	1.22	1.79

At each age, 40 mice of each sex were randomly selected from the colony, weighed, returned to the colony and excluded from further measurements. The mice were fed a diet containing 6% fat ([LabDiet® 5K52/5K67](#)) from weaning at 3 weeks of age until 8 weeks of age.

Parameter	Units	Females		Males	
Hematology					
Age	Weeks	8	16	8	16
White blood cell count (WBC)	10 ³ cells/μL	3.24	-	2.86	-
Red blood cell count (RBC)	10 ⁶ cells/μL	10.59	-	10.71	-
Hemoglobin	g/dL	17.1	-	17.3	-
Hematocrit	%	48.3	-	48.9	-
Mean cell volume (MCV)	fL	45.6	-	45.6	-
Mean cell hemoglobin (MCH)	pg	16.1	-	16.2	-
Mean cell hemoglobin concentration (MCHC)	g/dL	35.4	-	35.5	-
Platelet count	10 ³ cells/μL	1001	-	994	-
Mean platelet volume (MPV)	fL	7.0	-	7.8	-
Percent reticulocytes	%	3.2	-	2.8	-
Reticulocyte hemoglobin	pg	17.0	-	16.7	-
Reticulocyte count	10 ⁹ cells/L	336.3	-	300.6	-
Percent neutrophils	%	14.8	-	23.1	-
Percent Lymphocytes	%	80.6	-	71.9	-
Percent Monocytes	%	0.8	-	0.9	-
Percent Eosinophils	%	3.0	-	2.9	-
Percent Basophils	%	0.2	-	0.8	-
Neutrophil count	10 ³ cells/μL	0.49	-	0.60	-
Lymphocyte count	10 ³ cells/μL	2.61	-	2.14	-
Monocyte count	10 ³ cells/μL	0.03	-	0.02	-
Eosinophil count	10 ³ cells/μL	0.10	-	0.06	-
Basophil count	10 ³ cells/μL	0.01	-	0.02	-

Biochemistry					
Albumin	g/dL	3.8	-	3.2	-
Total protein	g/dL	5.7	-	5.4	-
Blood urea nitrogen	mg/dL	17	-	20	-
Calcium	mg/dL	10.2	-	9.5	-
Phosphorous	mg/dL	9.5	-	9.0	-
Cholesterol	mg/dL	80	-	78	-
HDL cholesterol	mg/dL	68.8	-	76.4	-
Triglycerides	mg/dL	99	-	92	-
Free fatty acids	mEq/L	1.71	-	1.62	-
Glucose	mg/dL	112	-	114	-
Alanine tranferase	IU/L	68	-	60	-
Creatine kinase	IU/L	768	-	428	-
Thyroxine/T4	μg/dL	8.1	-	8.0	-

Parameter	Units	Females		Males	
Organ Weights					
Age	Weeks	8	16	8	16
Brain	g	0.402	-	0.406	-
	% of body weight	2.02	-	1.69	-
Heart	g	0.162	-	0.115	-
	% of body weight	0.84	-	0.48	-
Liver	g	0.993	-	1.162	-
	% of body weight	4.99	-	4.81	-
Left kidney	g	0.120	-	0.188	-
	% of body weight	0.61	-	0.78	-
Right kidney	g	0.124	-	0.189	-
	% of body weight	0.62	-	0.78	-
Spleen	g	0.082	-	0.076	-
	% of body weight	0.41	-	0.28	-

Body Composition by DEXA Analysis					
DEXA body weight	g; Total Tissue	19.14	-	23.45	-
Bone mineral density	g/cm ²	0.049	-	0.048	-
Bone mineral content	g	0.374	-	0.413	-
Bone area	cm ²	7.68	-	8.60	-
Lean tissue	g	14.9	-	18.7	-
Fat tissue	g	4.2	-	4.8	-
Percent fat tissue	%	22.2	-	20.2	-

Flow Cytometry - Spleen					
Lymphoid cells					
B cells					
B cells (B220+)	%	53.43	-	51.05	-
T cells					
CD4 T cells (CD3+, CD4+)	%	16.95	-	20.82	-
CD8 T cells (CD3+, CD8+)	%	9.45	-	10.58	-
NK cells (CD3-, NKG2D+)	%	1.75	-	2.07	-
NKT cells (CD3+, NKG2D+)	%	0.57	-	0.71	-
Myeloid cells					
Granulocytes (MAC1+, GR1+)	%	0.78	-	1.08	-
Monocytes (MAC1+, GR1-)	%	3.43	-	3.29	-

For 8 week data, mice of each sex were obtained at 8 weeks of age (BD +/- 3 days) from production rooms. All measurements are non-fasted values.