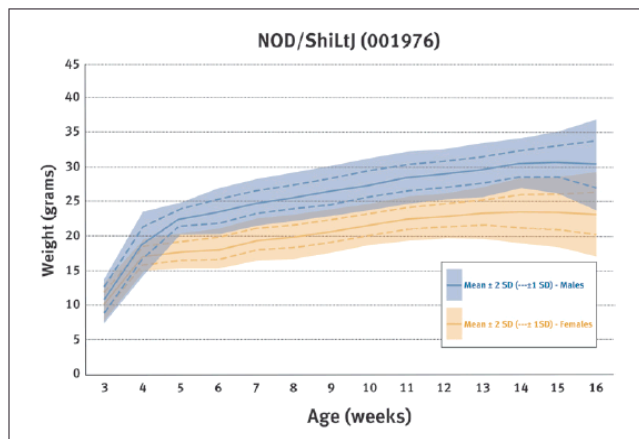


Complete data with range and standard deviations available from the Mouse Phenome Database (MPD, www.jax.org/phenome) and enter the term "jaxpheno" into the search box, or go directly to this url: phenome.jax.org/pub/cgi/phenome/mpdcgi?rtn-views%2Fsearch&req=jaxpheno.



Body Weights								
Age (weeks)		3	4	5	6	7	8	9
Female	Mean	10.31	17.10	17.72	18.14	19.41	19.97	20.67
	SD	1.38	1.14	1.29	1.44	1.50	1.62	1.54
Male	Mean	10.56	18.80	22.47	23.50	24.79	25.57	26.47
	SD	1.66	2.29	1.19	1.64	1.70	1.72	1.84

Body Weights								
Age (weeks)		10	11	12	13	14	15	16
Female	Mean	21.62	22.53	22.81	23.32	23.54	23.43	23.17
	SD	1.54	1.59	1.64	1.87	2.38	2.54	3.05
Male	Mean	27.40	28.46	28.91	29.54	30.44	30.73	30.33
	SD	1.92	1.90	1.85	1.95	1.80	2.21	3.28

Approximately 50 mice of each sex were obtained at weaning (BD +/- 1 day) from production rooms individually identified and weighed the same day every week. The mice were fed a diet containing 6% fat ([LabDiet@5K52/5K67](#)) from weaning at 3 weeks until 16 weeks of age.

Parameter	Units	Females		Males	
Hematology					
Age	Weeks	8	16	8	16
White blood cell count (WBC)	10 ³ cells/ μ L	2.61	2.25	1.87	1.76
Red blood cell count (RBC)	10 ⁶ cells/ μ L	9.73	9.87	10.32	10.27
Hemoglobin	g/dL	16.8	16.8	17.2	16.8
Hematocrit	%	49.5	49.9	53.1	51.7
Mean cell volume (MCV)	fL	50.9	50.5	51.5	50.4
Mean cell hemoglobin (MCH)	pg	17.3	17.1	16.7	16.4
Mean cell hemoglobin concentration (MCHC)	g/dL	33.9	33.9	32.4	32.6
Platelet count	10 ³ cells/ μ L	1066	1012	1206	1198
Mean platelet volume (MPV)	fL	6.5	5.9	6.0	5.9
Percent reticulocytes	%	4.6	3.9	4.1	3.8
Reticulocyte hemoglobin	pg	17.8	17.7	17.6	17.3
Reticulocyte count	10 ⁹ cells/L	443.7	385.0	420.7	392.4
Percent neutrophils	%	25.9	28.2	26.4	34.0
Percent Lymphocytes	%	66.4	65.1	65.8	59.8
Percent Monocytes	%	1.9	1.9	1.5	2.5
Percent Eosinophils	%	5.1	4.0	5.5	2.9
Percent Basophils	%	0.3	0.2	0.4	0.4
Neutrophil count	10 ³ cells/ μ L	0.63	0.63	0.48	0.58
Lymphocyte count	10 ³ cells/ μ L	1.77	1.47	1.26	1.07
Monocyte count	10 ³ cells/ μ L	0.05	0.05	0.03	0.05
Eosinophil count	10 ³ cells/ μ L	0.13	0.09	0.09	0.05
Basophil count	10 ³ cells/ μ L	0.01	0.01	0.01	0.01

Biochemistry					
Albumin	g/dL	4.0	3.1	2.7	3.7
Total protein	g/dL	6.4	5.3	6.3	6.4
Blood urea nitrogen	mg/dL	22	31	24	25
Calcium	mg/dL	10.9	9.5	10.6	10.4
Phosphorous	mg/dL	9.5	9.0	10.5	9.8
Cholesterol	mg/dL	79	126	108	110
HDL cholesterol	mg/dL	70.3	90.6	96.4	101.0
Triglycerides	mg/dL	127	463	81	142
Free fatty acids	mEq/L	2.13	3.26	1.64	2.63
Glucose	mg/dL	102	541	93	144
Alanine transferase	IU/L	36	65	62	38
Creatine kinase	IU/L	651	631	1264	607
Thyroxine/T4	μ g/dL	6.2	3.3	5.8	5.9

Parameter	Units	Females		Males	
Organ Weights					
Age	Weeks	8	16	8	16
Brain	g	0.475	0.471	0.458	0.480
	% of body weight	2.26	2.03	1.78	1.63
Heart	g	0.131	0.137	0.139	0.163
	% of body weight	0.63	0.58	0.55	0.55
Liver	g	1.115	1.302	1.332	1.694
	% of body weight	5.30	5.55	5.13	5.71
Left kidney	g	0.117	0.160	0.190	0.248
	% of body weight	0.55	0.69	0.73	0.84
Right kidney	g	0.125	0.163	0.177	0.258
	% of body weight	0.59	0.71	0.68	0.87
Spleen	g	0.074	0.084	0.071	0.085
	% of body weight	0.35	0.35	0.27	0.29

Body Composition by DEXA Analysis					
DEXA body weight	g; Total Tissue	21.25	21.29	25.77	29.11
Bone mineral density	g/cm ²	0.048	0.054	0.050	0.054
Bone mineral content	g	0.414	0.524	0.443	0.541
Bone area	cm ²	8.60	9.73	8.88	10.01
Lean tissue	g	17.0	17.9	21.1	23.6
Fat tissue	g	4.3	3.4	4.7	5.5
Percent fat tissue	%	19.6	15.7	17.9	18.4

Flow Cytometry - Spleen					
Lymphoid cells					
B cells					
B cells (B220+)	%	45.30	44.88	46.83	47.60
T cells					
CD4 T cells (CD3+, CD4+)	%	20.93	22.88	21.72	21.78
CD8 T cells (CD3+, CD8+)	%	11.73	12.18	9.56	10.20
NK cells (CD3-, NKG2D+)	%	1.80	1.87	1.72	2.57
NKT cells (CD3+, NKG2D+)	%	1.16	1.51	1.12	1.47
Myeloid cells					
Granulocytes (MAC1+, GR1+)	%	1.88	1.65	1.74	1.33
Monocytes (MAC1+, GR1-)	%	4.17	3.67	3.79	4.55

For 8 week data, mice of each sex were obtained at 8 weeks of age (BD +/- 3 days) from production rooms. For 16 week data, mice of each sex were obtained at weaning (BD +/- 1 day) from production rooms and maintained until 16 weeks of age. All measurements are non-fasted values.